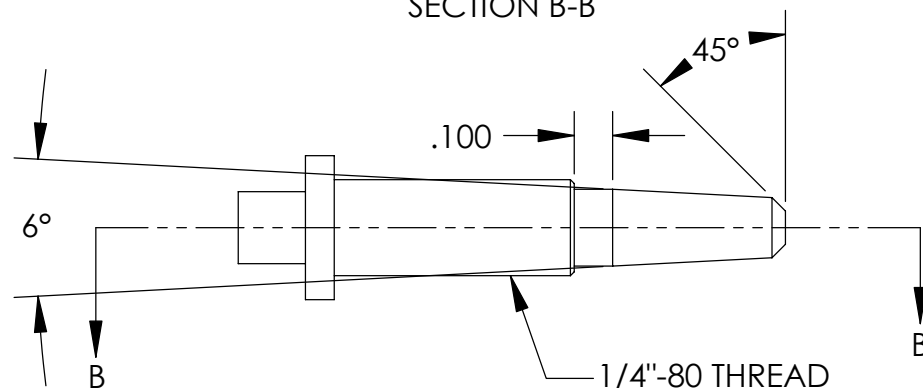
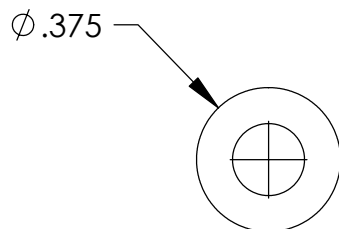
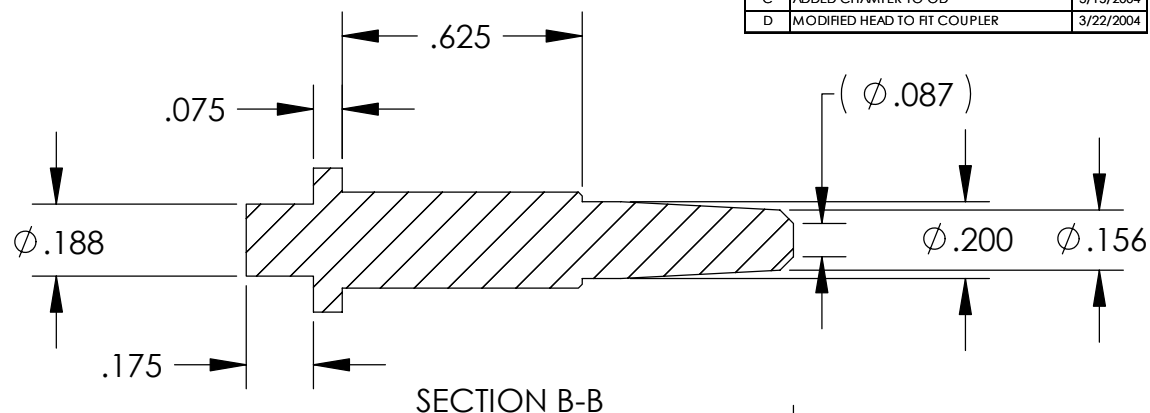
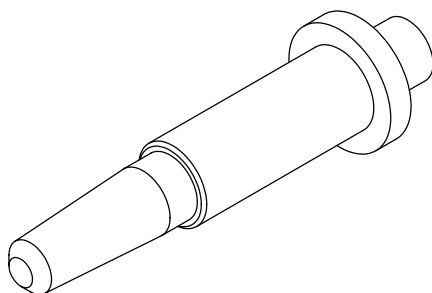


REV	DESCRIPTION	DATE
B	WAS #10 THREAD	11/5/2003
C	ADDED CHAMFER TO OD	3/15/2004
D	MODIFIED HEAD TO FIT COUPLER	3/22/2004



#### NOTES:

1. 1/4-80 THREAD TO FIT WITH P/N -097.
2. DRILL POINT IS PERMISSIBLE AT BOTTOM OF .188 DIA.
3. .188 DIA TO FIT WITH P/N -330.



#### UNLESS OTHERWISE SPECIFIED:

DIMENSIONS ARE IN INCHES  
DECIMAL TOLERANCES:

.X  $\pm .030$  .XX  $\pm .015$  .XXX  $\pm .005$

ANGULAR TOL:  $\pm 1^\circ$  SURFACE ROUGHNESS:  $\sqrt{63}$

INTERNAL AND EXTERNAL SURFACE  
INTERSECTIONS SHALL BE UNIFORMLY  
FINISHED WITH CHAMFER .005/.010 X  $45^\circ$   
OR RADIUS .005/.010.  
CHAMFER ALL THREADED HOLES  $110^\circ$  OF  
MAJOR DIAMETER X  $45^\circ$

MATERIAL: **304/316 SST**

FINISH: **N/A**

## High Precision Devices

1668 Valtrec Lane, Suite C, Boulder, Colorado 80301  
Phone: (303) 447-2558 Fax: (303) 447-2548 Web Site: [www.hpd-online.com](http://www.hpd-online.com)

TITLE:

**p02101-156 needle screw**

CONFIGURATION: **00-Default**

SIZE	QTY PER ASSM:	SCALE:	SHEET	OF	REV
<b>A</b>	<b>1</b>	<b>2:1</b>	<b>1</b>	<b>1</b>	<b>D</b>
DATE: <b>5/17/2004</b>		DRAWN BY: <b>C. Danaher</b>			